

# HORN FOR PROFESSIONAL DRIVERS



## PH-240

### SPECIFICATIONS:

- MATERIAL: A.B.S.
- COLOR: BLACK
- NOMINAL COVERAGE ANGLE (H X V)-6dB: 90° x 55°
- CUT OFF FREQUENCY ( HZ ) 780
- THROAT DIAMETER MM: 25 MM (1")
- MOUNTING TYPE: SCREW-ON

### MOUNTING DIMENSIONS:

- REAR HEIGHT MM : 123 mm (4.84")
- REAR WIDTH MM : 193 mm (7.6")

### OVER DIMENSIONS:

- MOUTH HEIGHT MM : 162 mm (6.4")
- MOUTH WIDTH MM : 243 mm (9.6")
- LENGTH MM : 90 mm (3.54")

- MOUNTING FLANGE THICKNESS MM : 4 mm (0.16")
- MOUNTING HOLES DIAMETER MM : 5 mm (0.20")
- MOUNTING HOLES NUMBER : 8

### BAFFLE CUT OUT MOUNTING:

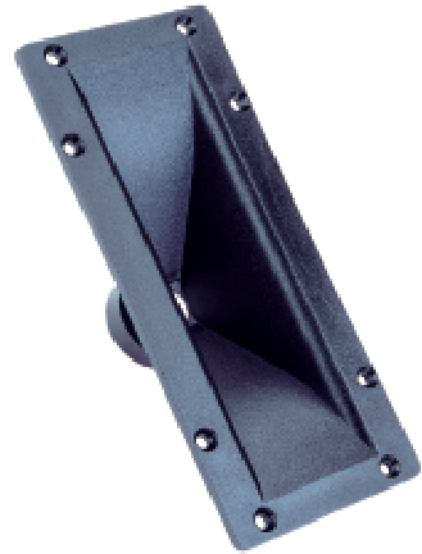
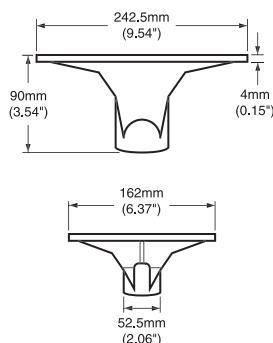
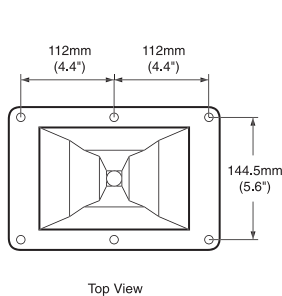
- HEIGHT MM : 125 mm (4.92")
- WIDTH MM : 200 mm (7.87")
- NET WEIGHT : 0.305 kg (0.77 lb)
- SHIPPING WEIGHT : 0.427 kg (0.939 lb)

### PACKING CARTON DIMENSION:

- 250 mm x 175 mm x 110 mm
- 9.84" x 6.89" x 4.33"

### HORN RECOMMENDED DRIVERS:

- PA-DE34S, PA-D38, SN-D34S, SN-D44S, WN-D34, PA-D26S



## PH-2510

### SPECIFICATIONS:

- MATERIAL: A.B.S. with glass filled black polycarbonate
- COLOR: BLACK
- NOMINAL COVERAGE ANGLE (H X V)-6dB: 100° x 80°
- CUT OFF FREQUENCY ( HZ ) 780
- THROAT DIAMETER MM: 25 MM (1")
- MOUNTING TYPE : SCREW-ON

### MOUNTING DIMENSIONS:

- REAR HEIGHT MM : 70 mm (2.75")
- REAR WIDTH MM : 225 mm (8.85")

### OVER DIMENSIONS:

- MOUTH HEIGHT MM : 110 mm (4.33")
- MOUTH WIDTH MM : 259 mm (10.36")
- LENGTH MM : 82 mm (3.28")

- MOUNTING FLANGE THICKNESS MM : 6.5 mm (0.25")
- MOUNTING HOLES DIAMETER MM : 6.3 mm (0.24")
- MOUNTING HOLES NUMBER : 8

### BAFFLE CUT OUT MOUNTING:

- HEIGHT MM : 75 mm (2.95")
- WIDTH MM : 220 mm (8.66")
- NET WEIGHT : 0.225 kg (0.484 lb)
- SHIPPING WEIGHT : 0.5 kg (1.1 lb)

### PACKING CARTON DIMENSION:

- 263 mm x 114 mm x 86 mm
- 10.35" x 4.48" x 3.38"

### HORN RECOMMENDED DRIVERS:

- PA-DE34S, PA-D38, WN-D34, SN-D34S, SN-D44S, PA-D26S

